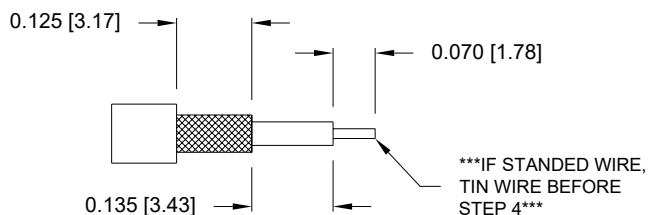
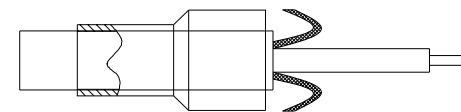


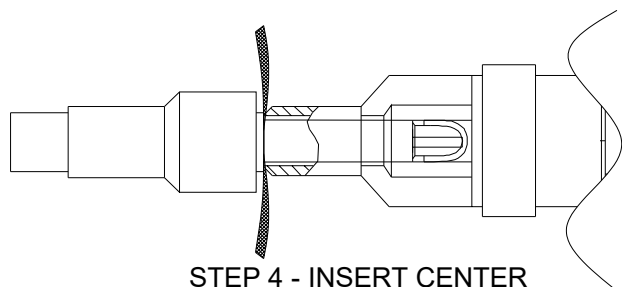
STEP 1 - SLIDE FERRULE OVER COAXIAL CABLE



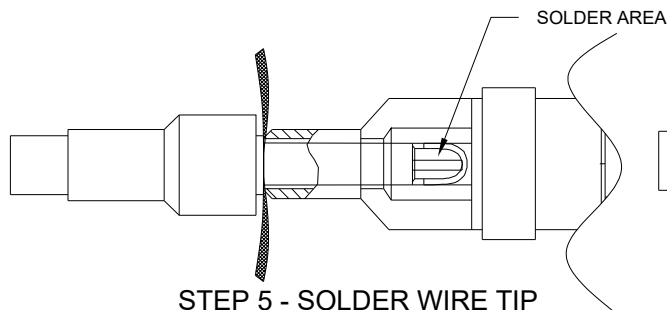
STEP 2 - STRIP WIRE TO CORRECT LENGTH



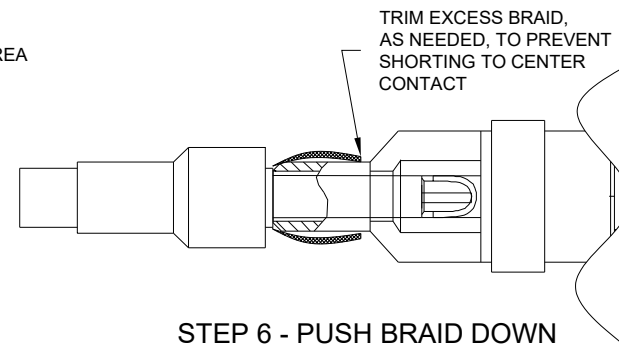
STEP 3 - PEEL BACK BRAID TO EDGE OF CABLE JACKET



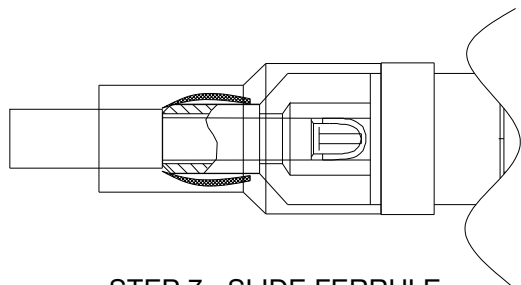
STEP 4 - INSERT CENTER CONDUCTOR INTO CONTACT



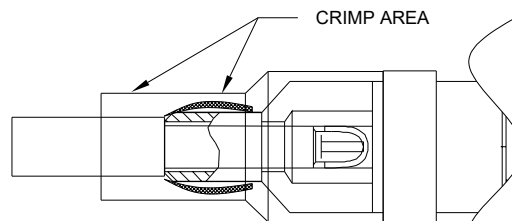
STEP 5 - SOLDER WIRE TIP TO COAXIAL CONTACT



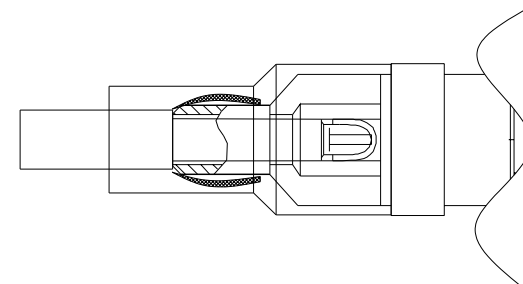
STEP 6 - PUSH BRAID DOWN OVER CONTACT TIP



STEP 7 - SLIDE FERRULE OVER CONTACT



STEP 8 - CRIMP FERRULE TO HOLD COAXIAL CABLE



STEP 9 - INSERT CABLE/CONTACT ASSEMBLY IN CONNECTOR

**"Crimp tool with 0.128 [3.25] across flats recommended"**

**NOTE => Once contacts are installed, they are not designed to be removed**

RoHS COMPLIANT



THESE DRAWINGS AND SPECIFICATIONS ARE THE PROPERTY OF NorComp AND SHALL NOT BE REPRODUCED, COPIED OR USED AS THE BASIS FOR THE MANUFACTURE OR SALE OF APPARATUS WITHOUT WRITTEN PERMISSION.

DRAWN:

J. KADEL

DATE:

06/30/2020

UNITS = inch [mm]

DO NOT SCALE FROM DRAWING

NorComp

SCALE:

NTS

SHEET

1

OF

1

REV

1

DWG NO.

682M CONTACT ASSEMBLY